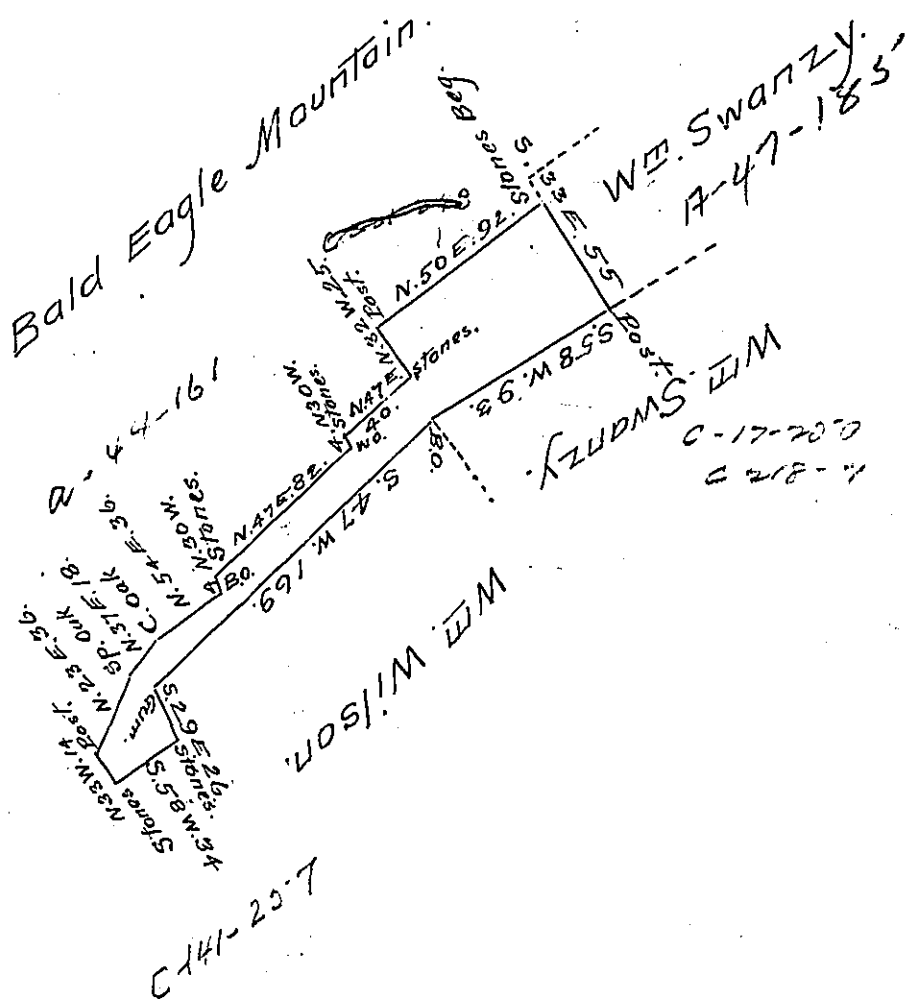


Courses & distances
Beg. at stones.

S.	33	E.	55	Post.
S.	58	W.	93	Bo.
S.	47	W.	169	Gum.
S.	29	E.	26	Stones.
S.	58	W.	34	Stones.
N.	33	W.	14	Post.
N.	23	E.	36	Sp. Oak.
N.	37	E.	18	Ch. oak.
N.	54	E.	36	Bo.
N.	30	W.	4	Stones.
N.	47	E.	82	Wo.
N.	30	W.	4	Stones.
N.	47	E.	40	Stones.
N.	32	W.	25	Post.
N.	50	E.	92	to Beg.



The Draught of a tract of land situate in Walker Township Centre County containing forty four acres, eight perches and allowance of six per cent for Roads &c. Surveyed the 5th day of May 1813 in pursuance of a warrant granted to William Swarzy the 3rd day of December 1812.

The above survey includes an improvement made in the spring of 1803, and consists of a cabin house and stable; and about five acres of cleared land - at the time of making the survey part of Mr Swarzy's family lived in the Cabin on the said tract.

To Andrew Porter Esquire } Wm. Kerr D.S.
Surveyor General of Pennsylvania }

IN TESTIMONY that the above is a copy of the original remaining on file in the Department of Internal Affairs of Pennsylvania, made conformably to an Act of Assembly approved the 16th day of February, 1833, I have hereunto set my Hand and caused the Seal of said Department to be affixed at Harrisburg, this twenty seventh day of March 1907.

Isaac R. Brown
Secretary of Internal Affairs.